

# Lower Lakes, Coorong Bathymetry

## Legend

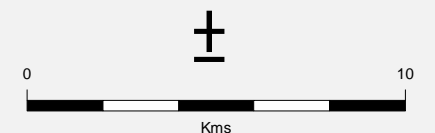
- Towns
- Barrages

## Lower Lakes Bathymetry (m AHD) Contours

- 0.1 m
- 0.6 m
- 1.2 m
- 1.5 m
- 0.4 m Lake Alexandrina water level 7/3/2008 (five day average)
- 0.5 m Lake Albert water level 14/3/2008 (five day average)

- Above 1.0 m
- 0.5 to 1 m
- 0 to 0.5 m
- 0.5 to 0 m
- 1.0 to -0.5 m
- 1.5 to -1.0 m
- 2.0 to -1.5 m
- 2.5 to -2.0 m
- 3.0 to -2.5 m
- Below -5.0 m

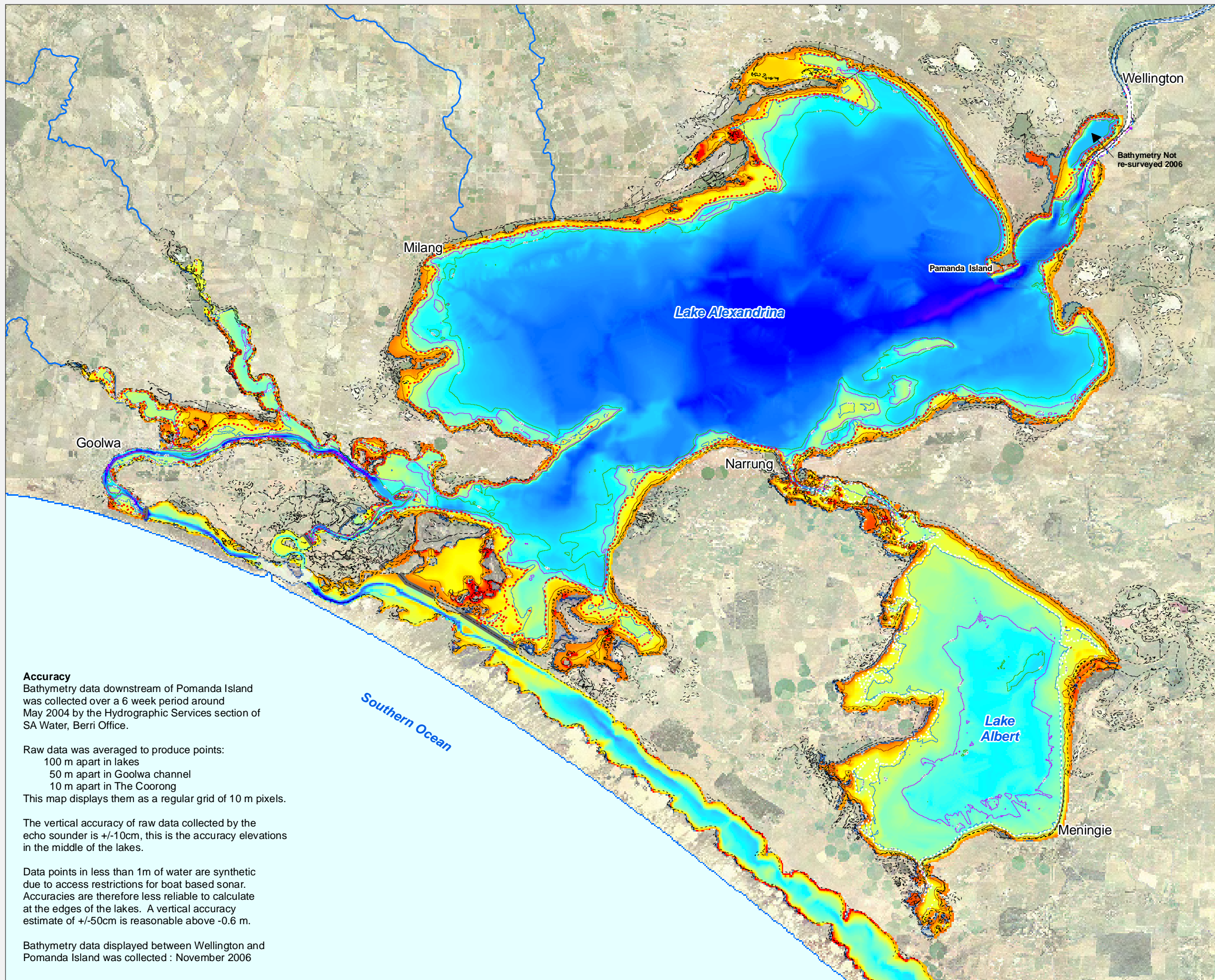
- Wetlands



**Produced by** Environmental Information Department for Environment and Heritage  
GPO Box 1047, Adelaide 5001  
[www.environment.sa.gov.au](http://www.environment.sa.gov.au)  
Bathymetry - SA Water, 2004

**Data Source** Aerial Photography 2 metre resolution - 2000  
**Compiled** 29 May 2008  
**Projection** Lambert Conformal Conic  
**Datum** Geocentric Datum of Australia, 1994

© Copyright Department for Environment and Heritage 2008.  
All Rights Reserved. All works and information displayed are subject to Copyright. For the reproduction or publication beyond that permitted by the Copyright Act 1968 (Cwth) written permission must be sought from the Department.  
Although every effort has been made to ensure the accuracy of the information displayed, the Department, its agents, officers and employees make no representations, either express or implied, that the information displayed is accurate or fit for any purpose and expressly disclaims all liability for loss or damage arising from reliance upon the information displayed.



**Accuracy**  
Bathymetry data downstream of Pomanda Island was collected over a 6 week period around May 2004 by the Hydrographic Services section of SA Water, Berri Office.

Raw data was averaged to produce points:  
100 m apart in lakes  
50 m apart in Goolwa channel  
10 m apart in The Coorong  
This map displays them as a regular grid of 10 m pixels.

The vertical accuracy of raw data collected by the echo sounder is +/-10cm, this is the accuracy elevations in the middle of the lakes.

Data points in less than 1m of water are synthetic due to access restrictions for boat based sonar. Accuracies are therefore less reliable to calculate at the edges of the lakes. A vertical accuracy estimate of +/-50cm is reasonable above -0.6 m.

Bathymetry data displayed between Wellington and Pomanda Island was collected : November 2006